



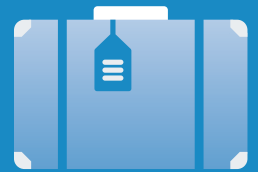
Employee Benefits

part 1 of 2

The University of London offers a range of Employee Benefits, including:

Generous Annual Leave

27 days or 30 days dependent upon level + closure days + Bank Holidays



Excellent Pension Schemes

USS for Academic and Managerial Staff and SAUL for Clerical Staff



Free Eye Care Vouchers

And contributions towards eye care



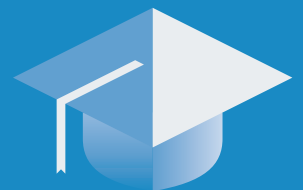
Salary Sacrifice

Schemes and staff benefits including Childcare Vouchers and Cycle to Work Scheme



Training

Range of staff development activities and wider educational opportunities



Courtauld Gallery

Free entry



Senate House Library

Free membership





Employee Benefits

part 2 of 2

Flexible Working

And Activity Based Working



Staff Association

And other societies –
Choir/Martial Arts/Drama



Interest Free Season Ticket Loan

Available after probation



EAP

A confidential service which provides practical information and emotional support on a wide range of topics



Incremental Salary Scale

Annual incremental progression through the salary band relevant to the role



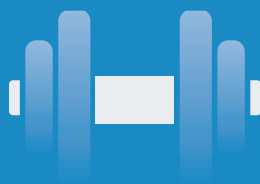
Housing Service

Advice on a range of private accommodation issues



Student Central Gym

Staff are entitled to free associate membership



Career Support

Careers coaching and advice on CV and applications

