



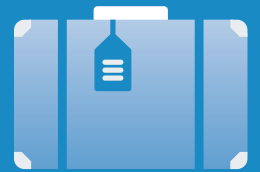
# Employee Benefits

part 1 of 2

The University of London offers a range of Employee Benefits, including:

## Generous Annual Leave

27 days or 30 days dependent upon level + closure days + Bank Holidays



## Excellent Pension Schemes

USS for Academic and Managerial Staff and SAUL for Clerical Staff



## Free Eye Care Vouchers

And contributions towards eye care



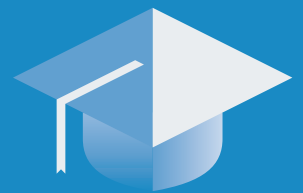
## Salary Sacrifice

Schemes and staff benefits including Childcare Vouchers and Cycle to Work Scheme



## Training

Range of staff development activities and wider educational opportunities



## Courtauld Gallery

Free entry



## Senate House Library

Free membership





# Employee Benefits

part 2 of 2

## Flexible Working

And Activity Based Working



## Staff Association

And other societies –  
Choir/Martial Arts/Drama



## Interest Free Season Ticket Loan

Available after probation



## EAP

A confidential service which provides practical information and emotional support on a wide range of topics



## Incremental Salary Scale

Annual incremental progression through the salary band relevant to the role



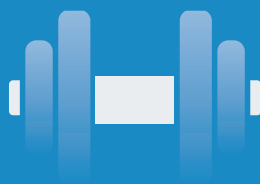
## Housing Service

Advice on a range of private accommodation issues



## Student Central Gym

Free to join and discounted monthly membership for staff



## Career Support

Careers coaching and advice on CV and applications

